

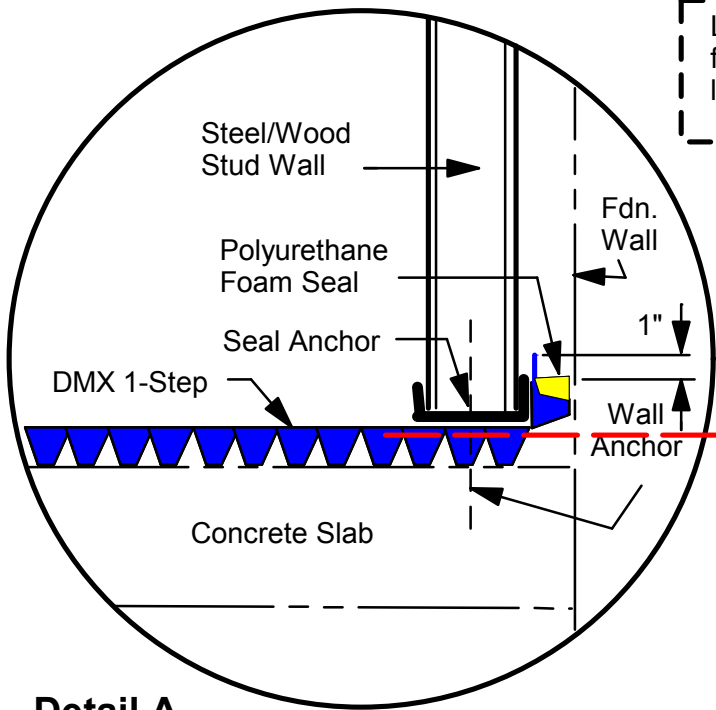


## Laminate Installation Step-by-Step Checklist

- Remove old floor, and underlayment for any that are unsound or deteriorated
  - Any previous rigid floor can be left in place if it is sound and firmly adhered to the substrate**
- Do not attempt to remove asbestos tiles yourself, have a professional do this who is licensed*
- Clean and sweep the concrete floor (or the existing flooring if it is sound)
- Inspect for cracks in the concrete
- For cracks larger than 1/16", fill with Quikrete concrete repair (As per Installation Video)
- Check the level of the floor with a draw string, it should not exceed a 3mm difference over 3m, or 1/8" over 10'.
- If required, level the floor with self levelling concrete compound or Pre-Mixed Floor Patch
- Lay DMX 1-Step™ (dimples facing down)
- If perimeter walls are finished to drywall, leave a ¼" gap between the 1-Step™ and foundation
- If perimeter walls are unfinished, take 1-Step™ to foundation wall and seal with foam  
([Click here for L-Cove drawing](#))
- Tape the seams of 1-Step™ (tape along the length of the seam first, then tape across)
- If desired (optional) you can install a layer of 5/8" OSB over 1-Step™*

### For OSB/Plywood over 1-Step the following should be performed for typical cases:

- Use Tap Con screws that are 2.25" long, 1/4" (Shank) diameter, Phillips head style
  - Use a Masonry Drill bit (to fit Tap Con screw thread diameter) and Hammer Drill
  - Pre-drill through the OSB/Plywood and 1-Step into the concrete slab to a depth of 1.25"± in the pattern shown in the drawing here.
  - Use Polyurethane Sealant (Sikaflex 1A or equivalent) and cut nozzle of tube so sealant can be pumped (injected) into pre-drilled hole. Fill hole until sealant stops flowing
  - Take a piece of cardboard (swatch), pump some sealant onto swatch
  - Take each Tap Con screw just before driving into the hole and concrete slab, dip it into the sealant on swatch ensuring threads have been covered with sealant
  - The Tap Con into the hole and drive the screw into the pre-drilled hole in concrete slab
  - Sealant will seal around the hole pre-drilled through the 1-Step to maintain vapour barrier properties as the screw is set
  - Ensure all Tap Con screws are properly seated into plywood (the heads are counter sunk (level) into plywood surface)
- 
- Lay down your laminate (8 mm minimum for application directly on top of 1-Step.). The thicker the laminate the firmer the floor will seem. It is recommended that the laminate flooring be laid perpendicular to the joints in the 1-Step™, where feasible.
  - Follow the laminate manufacturers installation instructions for proper fit of the floor
  - Allow ¼" clearance between drywall and laminate
  - Leave baseboards up off finished floor a minimum of 1/16" to 1/8" for air circulation



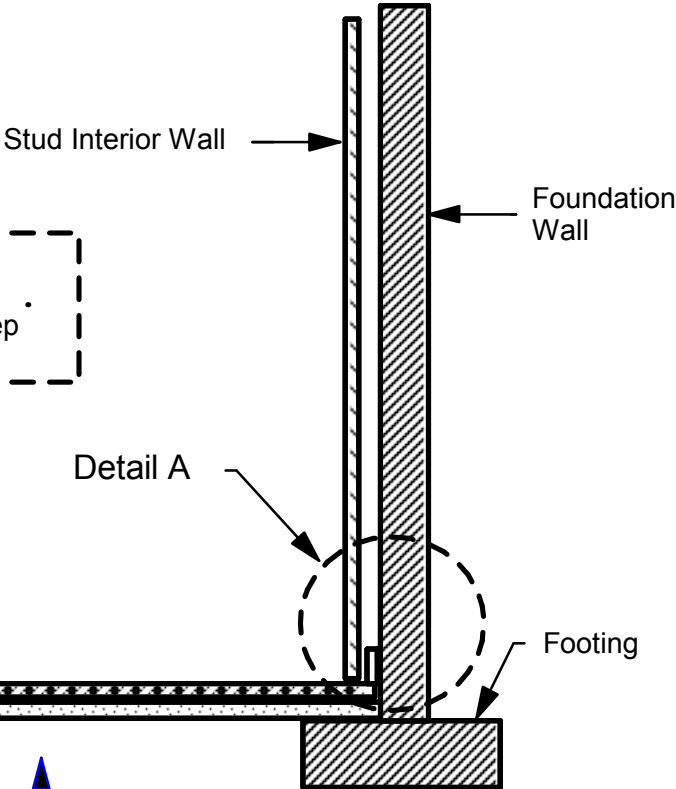
Leave a 1" opening in the foam seal every 10 ft of length for drainage

Visit [www.dmxplastics.com](http://www.dmxplastics.com) for video installation in addition to this drawing for detailing information

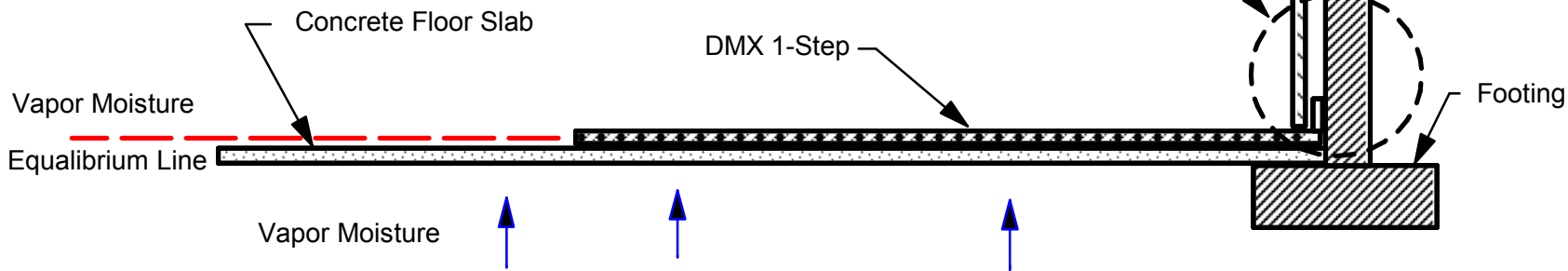
Bend 1-Step Dimples up wall 1 or 2 dimples before foam application to seal void

Line of Equalibrium

Note: Dip anchors in polyurethane sealant before instertion through wall bottom plate and 1-Step



**Detail A**



**DMX Plastics Limited - Technical Services - Product Support**

**Description:**  
**DMX 1-Step Foam Seal at Wall**

**Project:** Generic

**Date:** 06/2013

**Drawing No.** Rev 0

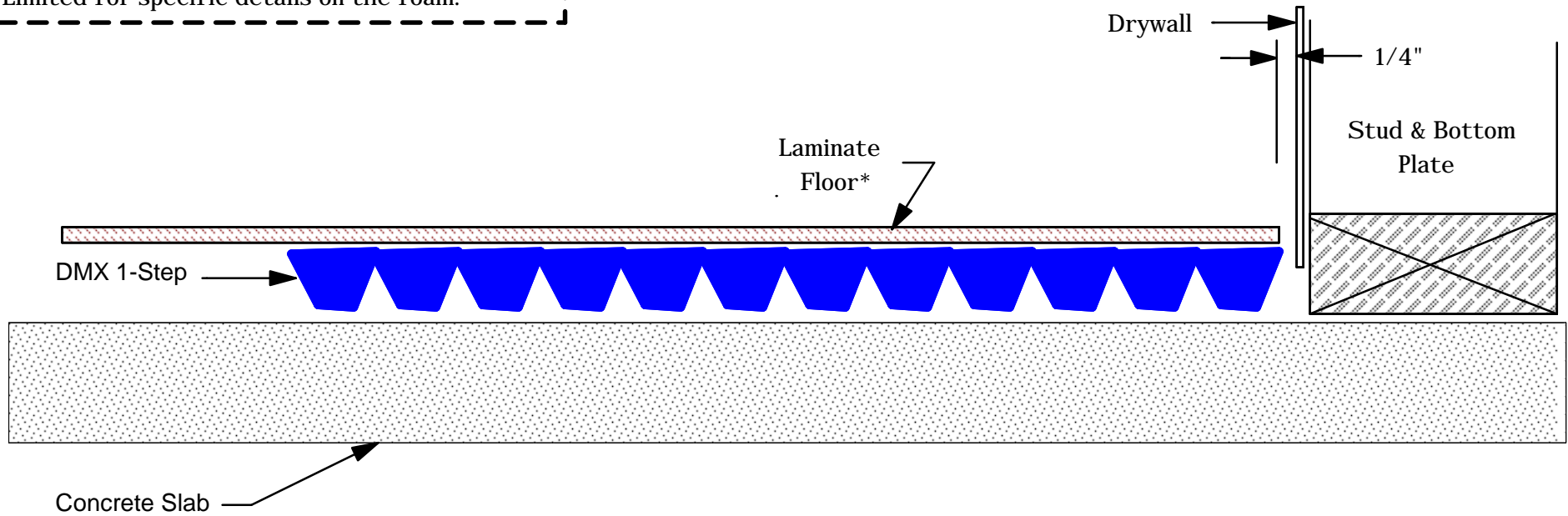
**Drawn By:** D.E.W.

**Scale:** NTS

**DMX-Foam-001**

Note: For acoustic performance of floors in commercial applications, the insertion of a 2 mm layer of closed cell foam between the laminate and 1-Step will meet the listed NALFA IIC and STC ratings. Contact DMX Plastics Limited for specific details on the foam.

(\*) Denotes Laminate Thickness to be 8 mm minimum, or the use of 5/8" OSB under laminate is required



## DMX 1-Step - Simplified Laminate/Engineered Hardwood Flooring Installation

DMX Plastics Limited - Technical Services - Product Support

Description:

Generic Install - Laminate/Eng'd Hardwd

Project: Generic

Drawn By: D.E.W.

Date: 07/2014

Scale: NTS

Drawing No. Rev 0

Laminate 001

Draft for Review

# Tapcon Pattern for 4'x8' Sheet

DMX Plastics Ltd.

